

Figure 15A. Weakly shocked pyroxene crystal in dark microbreccia. The crystal displays both cleavage (dark lines, NW-SE) and deformation twin lamellae (lighter parallel lines, NE-SW). Fragment 318,6; plane polarized light; scale bar 0.1 mm.

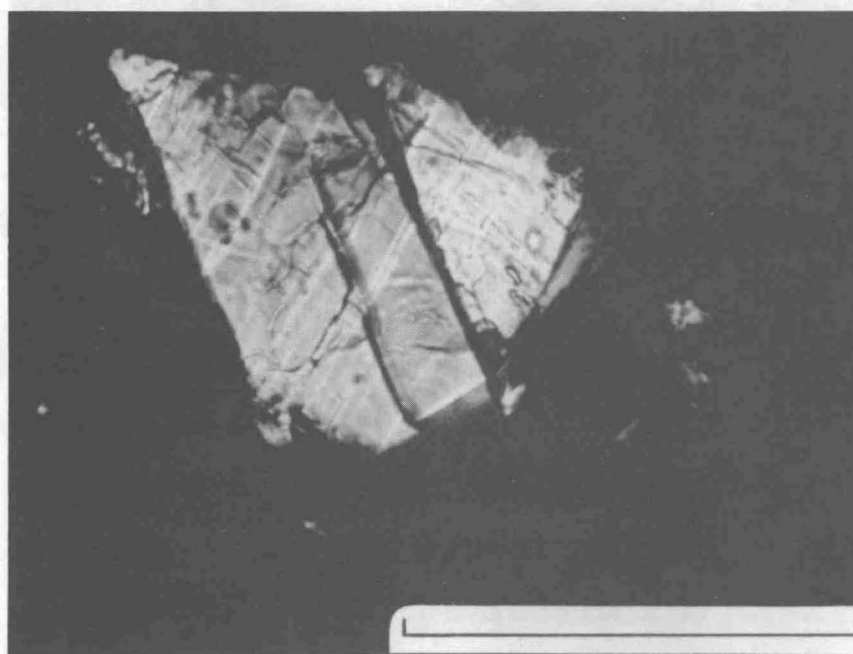


Figure 15B. Same view as Figure 15A; crossed polarizers. Deformation twin lamellae appear as bright lines. Extinction is mildly undulose but not mosaic.

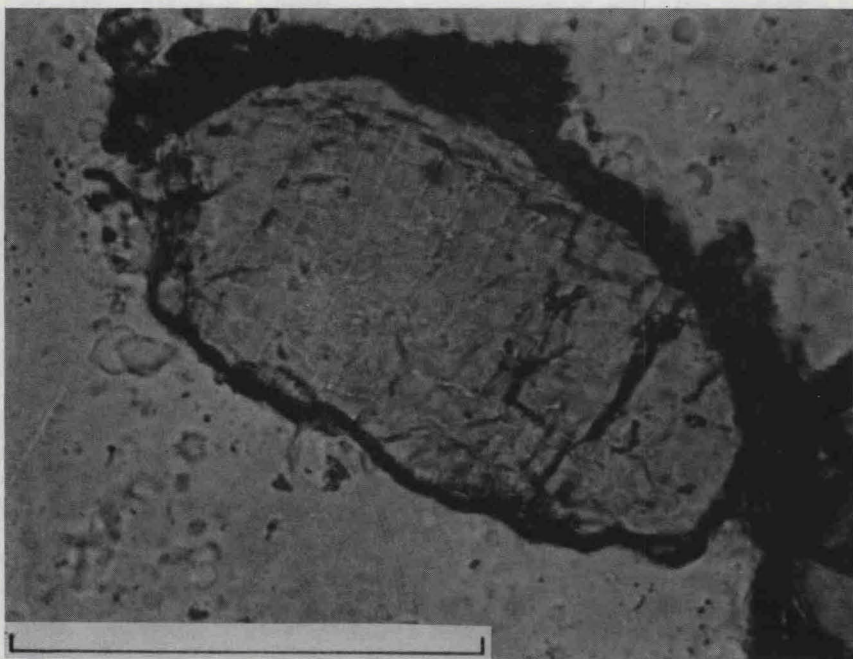


Figure 16A. Weakly shocked pyroxene crystal attached to dark microbreccia material. Features that are apparently deformation twin lamellae appear as very thin light lines running NE-SW. A second set of features (shock lamellae?) is poorly developed in an E-W direction at a high angle to the twin lamellae. Fragment 318,46; plane polarized light; scale bar 0.1 mm.

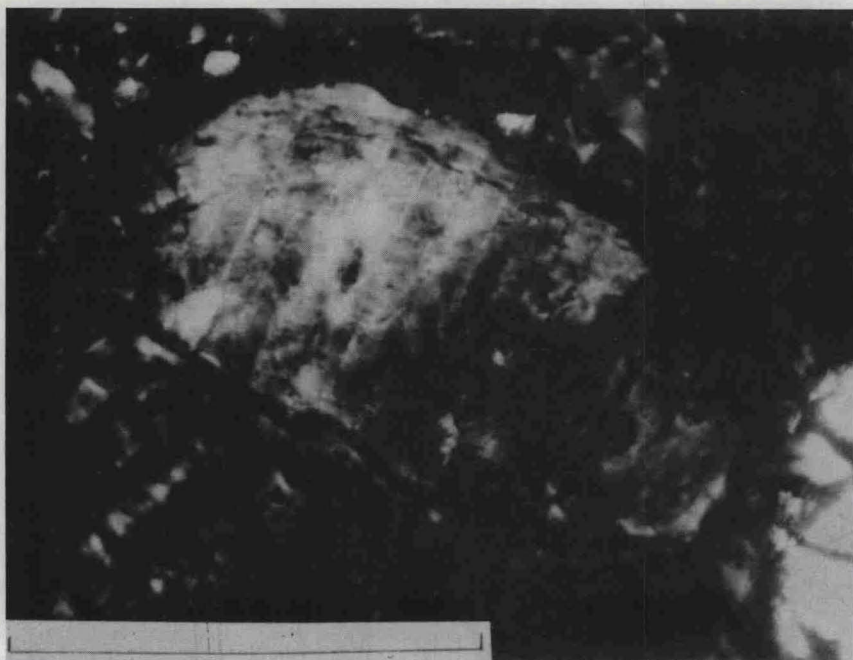


Figure 16B. Same view as Figure 16A; crossed polarizers. Extinction in the crystal is highly mosaic, more strongly so than in the crystal shown in Figure 15.